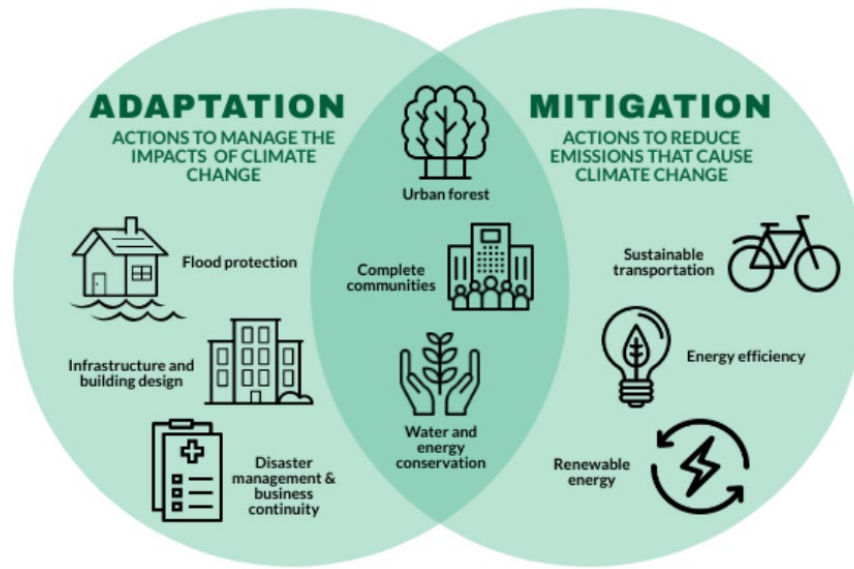


## What is “Climate Adaptation”?

There are two recognized approaches to responding to climate change: **mitigation** and **adaptation**.

- **Mitigation** – to avoid, reduce, or delay climate change by limiting heat-trapping greenhouse gas emissions (GHGs) in the atmosphere.
- **Adaptation** – to prepare for, and cope with, the inevitable consequences of climate change.



## What is in the CCAP?

The purpose of the CCAP is to provide a roadmap for Campbell River to prepare for the consequences of a changing climate, while identifying new opportunities for action as climate science evolves. In 2018, the City of Campbell River partnered with eight other municipalities on Vancouver Island to create tandem Climate Adaptation plans. Research, collaboration, and community workshops have since resulted in a list of 33 climate adaptation measures for Campbell River to consider.

## Climate Adaptation Measures

Research, collaboration and stakeholder input have been gathered to develop the following 33 actions. Each attempts address climate impacts and risks within one of five key focus areas: the built environment, natural environment, community health and wellbeing, economy, and enabling actions.

<b>Built Environment</b>	
<i>Includes infrastructure like road networks, sewer and storm drain systems, buildings that provide essential services to the community, and a water treatment facility.</i>	
<b>Action 1</b>	Conduct an infrastructure risk assessment to determine priority risks to assets under climate projections
<b>Action 2</b>	Develop plans to protect infrastructure and/or relocate sites based on risk.

<b>Action 3</b>	Study stormwater system vulnerability under climate change, and plan for upgrades to accommodate future precipitation projections.
<b>Action 4</b>	Establish a Flood Management Bylaw.
<b>Action 5</b>	Increase severe weather resiliency of docking facilities, including planned upgrades.
<b>Action 6</b>	Proactively prevent damage to trees and power lines.
<b>Action 7</b>	Establish a monitoring system for current and future precipitation intensities, reservoir levels, river flows/levels and sea level rise, sharing information so that data can inform planning decisions in City and community.
<b>Action 8</b>	Create a sea level rise education tool.
<b>Action 9</b>	Explore potential regulatory and financial mechanisms to increase pervious surfaces and rainwater management at the homeowner, subdivision, new commercial, and light industrial levels
<b>Action 10</b>	Increase use of green infrastructure on public and private property.

**Natural Environment**

*More frequent extreme weather and events such as wildfires, floods and droughts are compromising the land, air, water, plants and animals that make up our natural environment.*

<b>Action 11</b>	Review and update guidelines or requirements for erosion and run-off prevention.
<b>Action 12</b>	Move toward establishing an Integrated Watershed Management approach to improve the health and resilience of the watersheds.
<b>Action 13</b>	Develop a framework for monitoring and evaluation of ecosystem health and ecosystem services, identifying risks due to climate impacts and extreme weather.
<b>Action 14</b>	Increase education for City staff and community on invasive species and pests, continue to manage areas of invasive species within the City’s parks and public spaces, prepare for emerging invasive species threats as they appear, and develop consolidated invasive species strategy/policy.
<b>Action 15</b>	Identify opportunities to support viable conditions for marine habitat and species
<b>Action 16</b>	Reduce riparian harm and strengthen protection through policy tools and guidance.
<b>Action 17</b>	Develop an Environmentally Sensitive Area Management policy.
<b>Action 18</b>	Determine limits to tourism in sensitive areas and shut down vulnerable areas during high-risk periods.
<b>Action 19</b>	Conduct a tree canopy assessment to determine trees vulnerable to wind damage, changing temperature patterns, and other climate impacts.

**Community Health and Wellbeing**

*Climate change can create negative consequences to public health and safety, community wellbeing, livability, and cultural identity. Climate change impacts also exacerbate inequality by affecting certain groups more than others.*

<b>Action 20</b>	Plan for redundancy of critical routes for emergency response and flow of goods and services.
------------------	---

<b>Action 21</b>	Develop a strategy to monitor, plan for, and mitigate flooding due to dam breach.
<b>Action 22</b>	Build community capacity for personal preparedness and to reduce health risks associated with extreme weather.
<b>Action 23</b>	Implement the Community Wildfire Protection Plan.
<b>Action 24</b>	Create, review, and update Emergency Response and Recovery Plans relative to Campbell River's climate hazards.
<b>Action 25</b>	Establish more designated and accessible areas of refuge from extreme weather events.
<b>Action 26</b>	Develop network of support for populations in vulnerable situations including seniors, youth, and those experiencing homelessness.
<b>Action 27</b>	Communicate climate change-influenced health risks to the community.

**Economy**

*Impacts of climate change can have significant consequences for the local economy.*

<b>Action 28</b>	Support tourism sector in understanding the changing climate, sector-specific risks, and identifying opportunities to adapt and diversify.
<b>Action 29</b>	Support local businesses (i.e. fishing industry) in identifying and mitigating climate-related risks

**Enabling Actions**

*Those actions needed to move the Community Climate Adaptation Plan forward.*

<b>Action 30</b>	Develop a climate change communications strategy for the community of Campbell River.
<b>Action 31</b>	Integrate climate change adaptation into day-to-day decision making and practices at the City.
<b>Action 32</b>	Monitor and track implementation of the Community Climate Adaptation Plan and report on progress annually or biennially.
<b>Action 33</b>	Facilitate further dialogue with local First Nations to go through an action planning process and determine how the City can best support action implementation in a way that honours Indigenous sovereignty and autonomy.