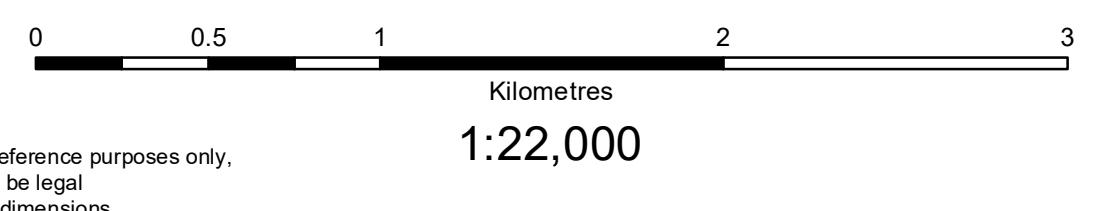
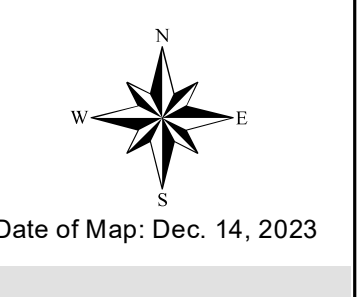


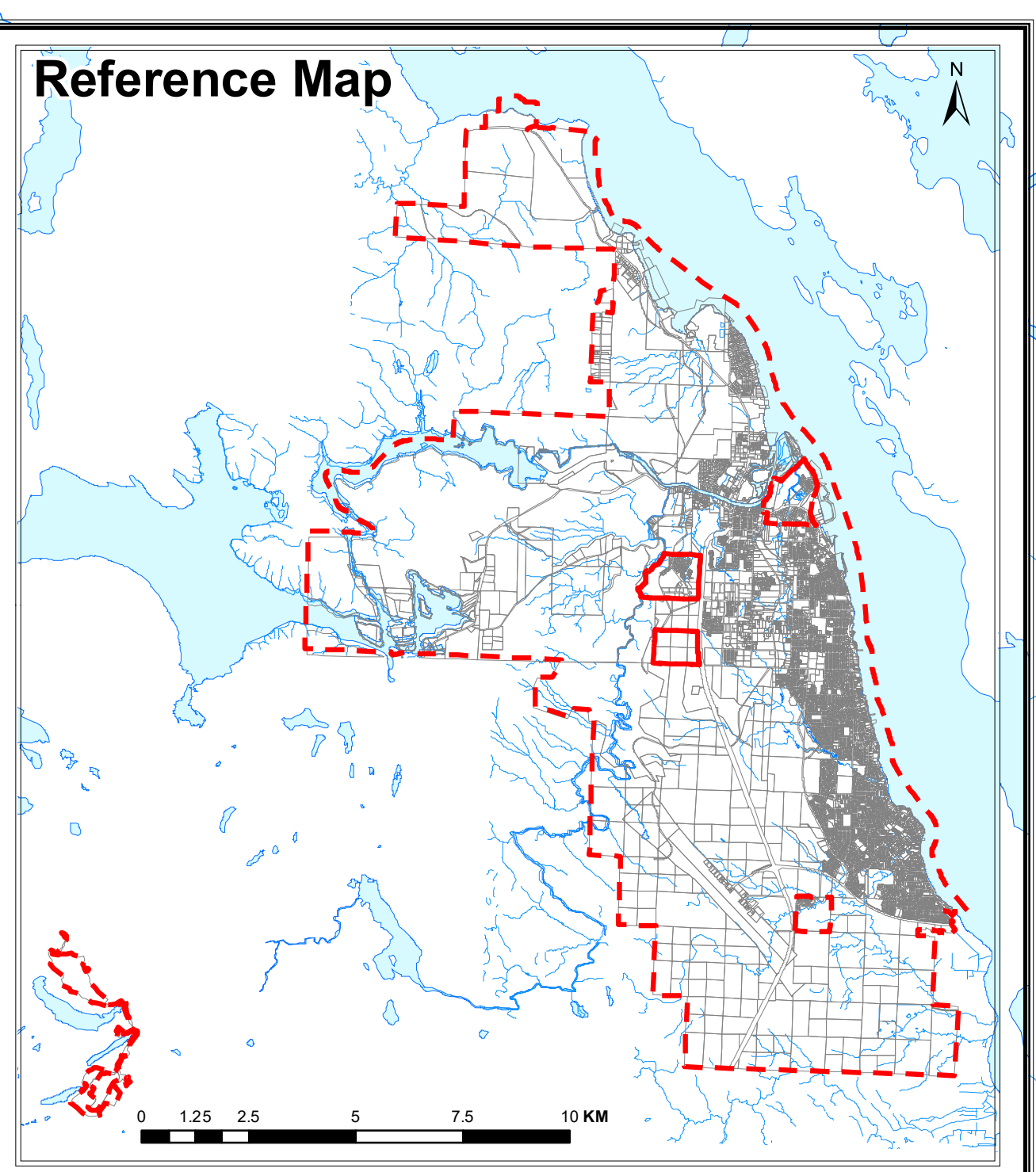
- Parcel Boundary
- Airport One (A-1) Zone
- Airport Two (A-2) Zone
- Commercial One (C-1) Zone
- Commercial One A (C-1A) Zone
- Commercial One B (C-1B) Zone
- Commercial One C (C-1C) Zone
- Commercial Two (C-2) Zone
- Commercial Three (C-3) Zone
- Commercial Four (C-4) Zone
- Commercial Four A (C-4A) Zone
- Commercial Four B (C-4B) Zone
- Commercial Four C (C-4C) Zone
- Commercial Four D (C-4D) Zone
- Commercial Five (C-5) Zone
- Commercial Six (C-6) Zone
- Commercial Seven (C-7) Zone
- Commercial Eight (C-8) Zone
- Comprehensive Development One A1 (CD1-A1) Zone
- Comprehensive Development One A2 (CD1-A2) Zone
- Comprehensive Development One A3 (CD1-A3) Zone
- Comprehensive Development One A4 (CD1-A4) Zone
- Comprehensive Development Two (CD2) Zone
- Comprehensive Development Three (CD3) Zone
- Comprehensive Development Four (CD4) Zone
- Comprehensive Development Five (CD5) Zone
- Comprehensive Development Six (CD6) Zone
- Comprehensive Development Seven (CD7) Zone
- Industrial One (I-1) Zone
- Industrial Two (I-2) Zone
- Industrial Three (I-3) Zone
- Industrial Four (I-4) Zone
- Lakeshore Commercial (LS-C) Zone
- Lakeshore Residential (LS-R) Zone
- Mobile Home Park (MHP) Zone
- Public Areas One (PA-1) Zone
- Public Areas Two (PA-2) Zone
- Public Areas Three (PA-3) Zone
- Residential One (R-1) Zone
- Residential One A (R-1A) Zone
- Residential One B (R-1B) Zone
- Residential One C (R-1C) Zone
- Residential Two (R-2) Zone
- Residential Two A (R-2A) Zone
- Residential Three (R-3) Zone
- Residential Secondary Dwelling (R-SD) Zone
- Residential Estate One (RE-1) Zone
- Residential Multiple One (RM-1) Zone
- Residential Multiple Two (RM-2) Zone
- Residential Multiple Three (RM-3) Zone
- Residential Multiple Four (RM-4) Zone
- Rural Recreation (RR-1) Zone
- Rural One (RU-1) Zone
- Rural Two (RU-2) Zone
- Rural Three (RU-3) Zone
- Unzoned / First Nations
- Water
- City Boundary



NOTE: This map is intended for general reference purposes only, and must not in any way be interpreted to be legal nor used to establish legal lot sizes or dimensions. Legal information or descriptions must be obtained from the City of Campbell River, 301 St. Ann's Road, Campbell River, British Columbia, Canada V9W 4C7



**City of Campbell River  
Zoning Bylaw No. 3250**



**Quinsam Coal**

