

INTRODUCTION

Elk Falls Cemetery is nearing capacity. Work is under way to enhance the existing burial area and to expand the cemetery to serve the community for the next 60+ years.

The appearance of the existing cemetery will be improved and integrated with the parkland character of the burial expansion area. The burial expansion area will be developed in two phases. The design of these areas will:

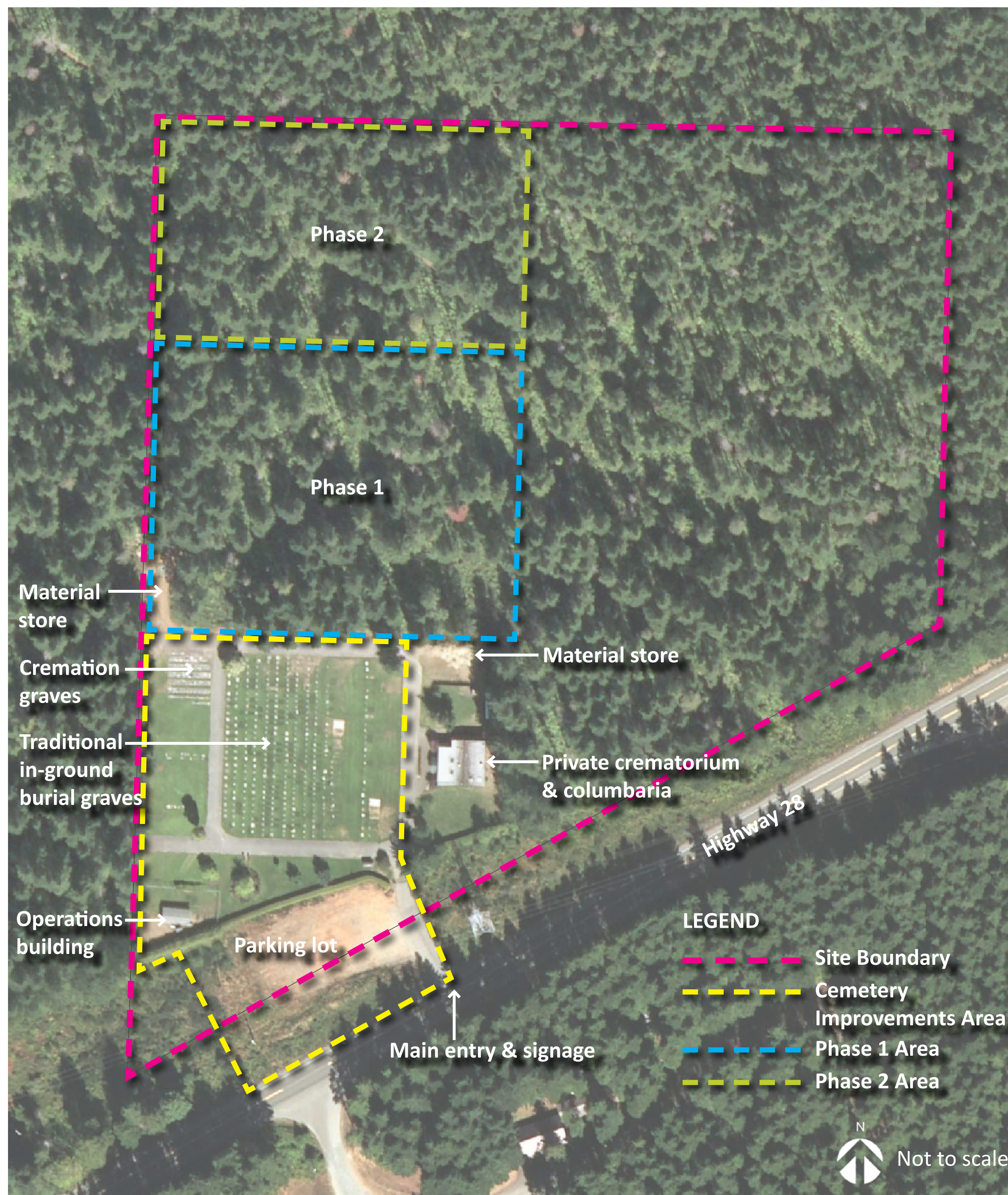
1. Respond to existing site conditions and utilize the existing forest to create a parkland burial area experience;
2. Accommodate a wide range of interment and memorialization options;
3. Create a sustainable and flexible phased plan, and
4. Provide for ease of maintenance and operations.

LOCATION PLAN



Not to scale

EXISTING SITE PLAN



Not to scale

EXISTING CHARACTER



Cremation graves



Traditional in-ground graves



Information kiosk



Entry sign



Main entry



Parking lot



Operations building



Private crematorium

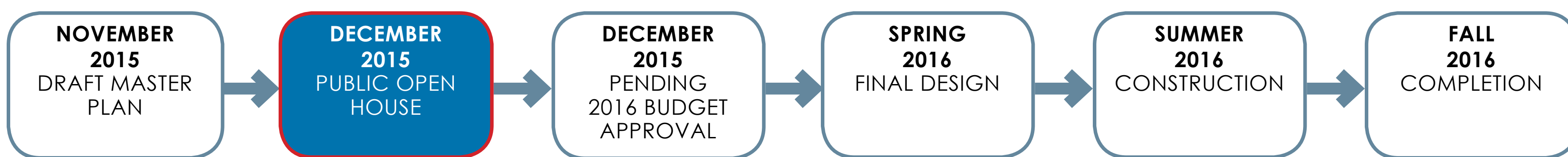


Forest



Material store

PROJECT TIMELINE



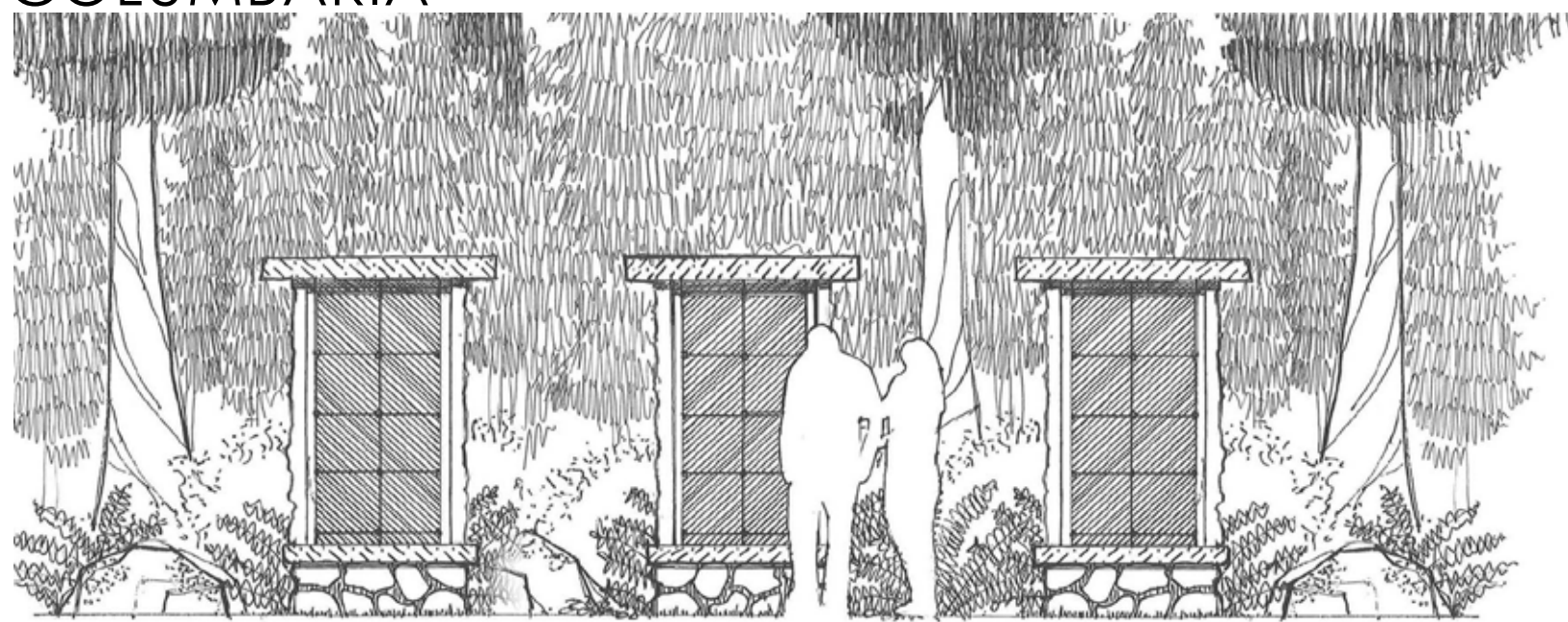
Existing cemetery

1. EXISTING CEMETERY  
ELK FALLS CEMETERY IMPROVEMENTS AND EXPANSION PROJECT



PRECEDENT IMAGES

COLUMBARIA



PARKLAND TREES & SCATTERING GARDENS



FAMILY VESSELS & HERITAGE STUMP MARKERS



GREEN BURIAL

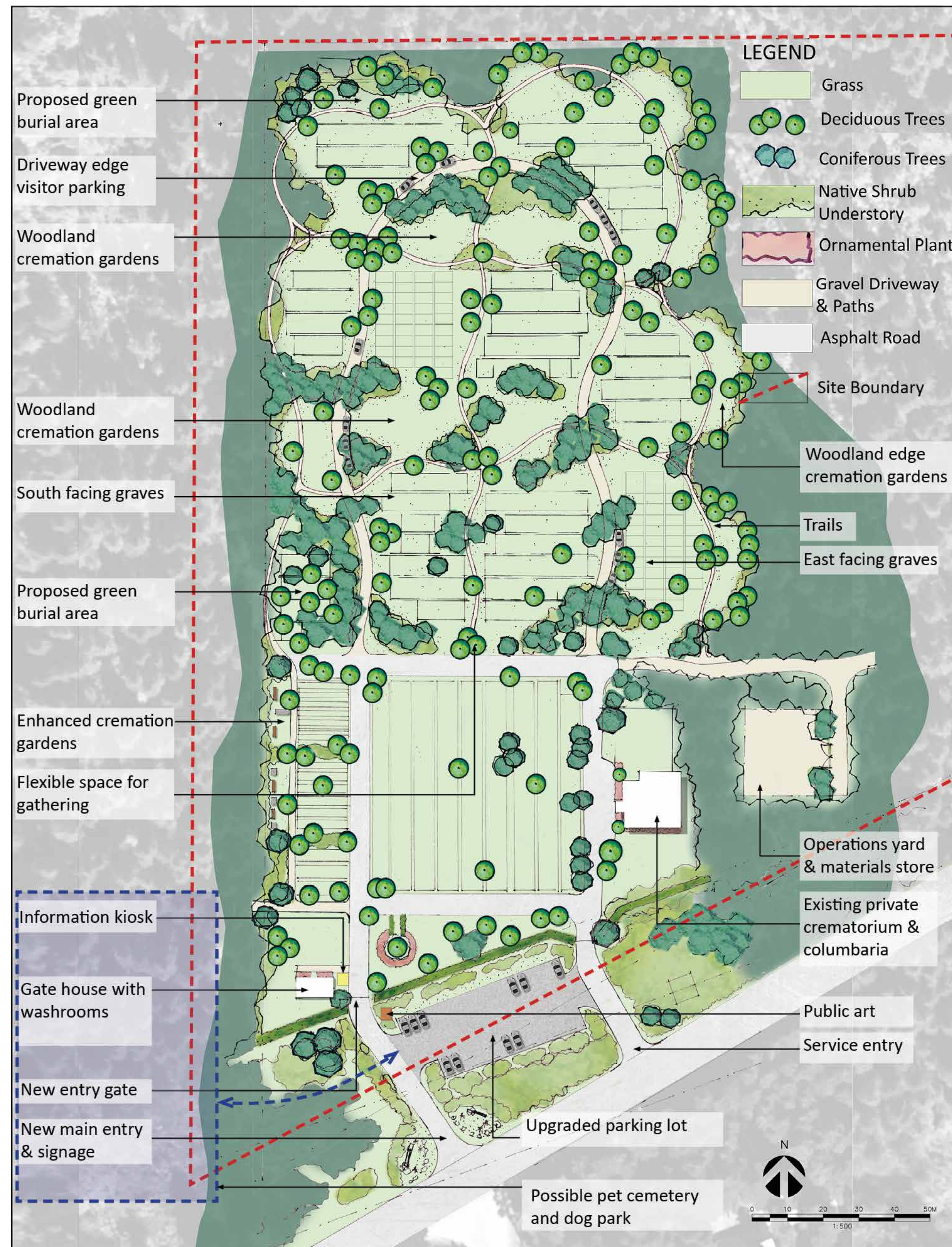


“Green Burial” or “Natural Burial” is an alternative to traditional burial practices and is seen as more environmentally friendly than traditional burial. The five principles of Green Burial are:

1. No embalming;
2. No outer burial container;
3. A biodegradable casket or shroud;
4. Minimal memorialization, and
5. Ecological restoration/ conservation.

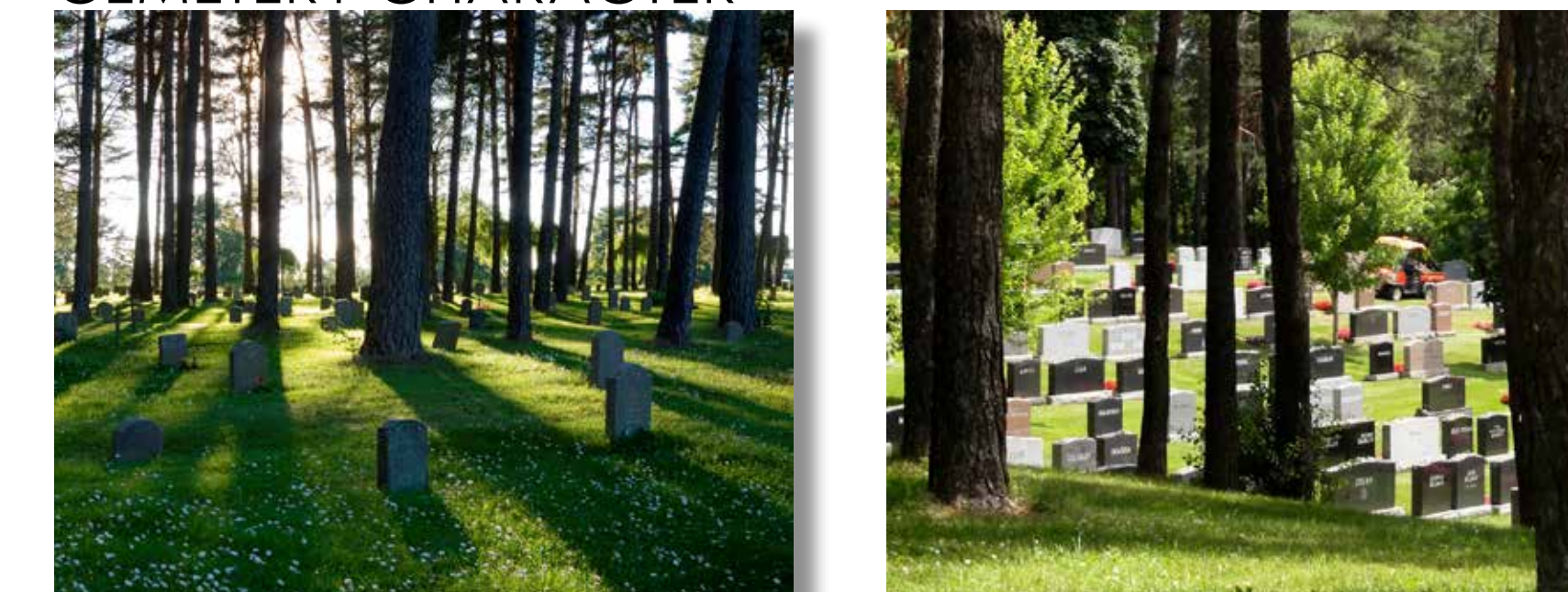
To find out more visit the Green Burial Society of Canada’s website: [www.greenburialcanada.ca](http://www.greenburialcanada.ca)

MASTER PLAN



PRECEDENT IMAGES

CEMETERY CHARACTER



MEMORIAL WALLS



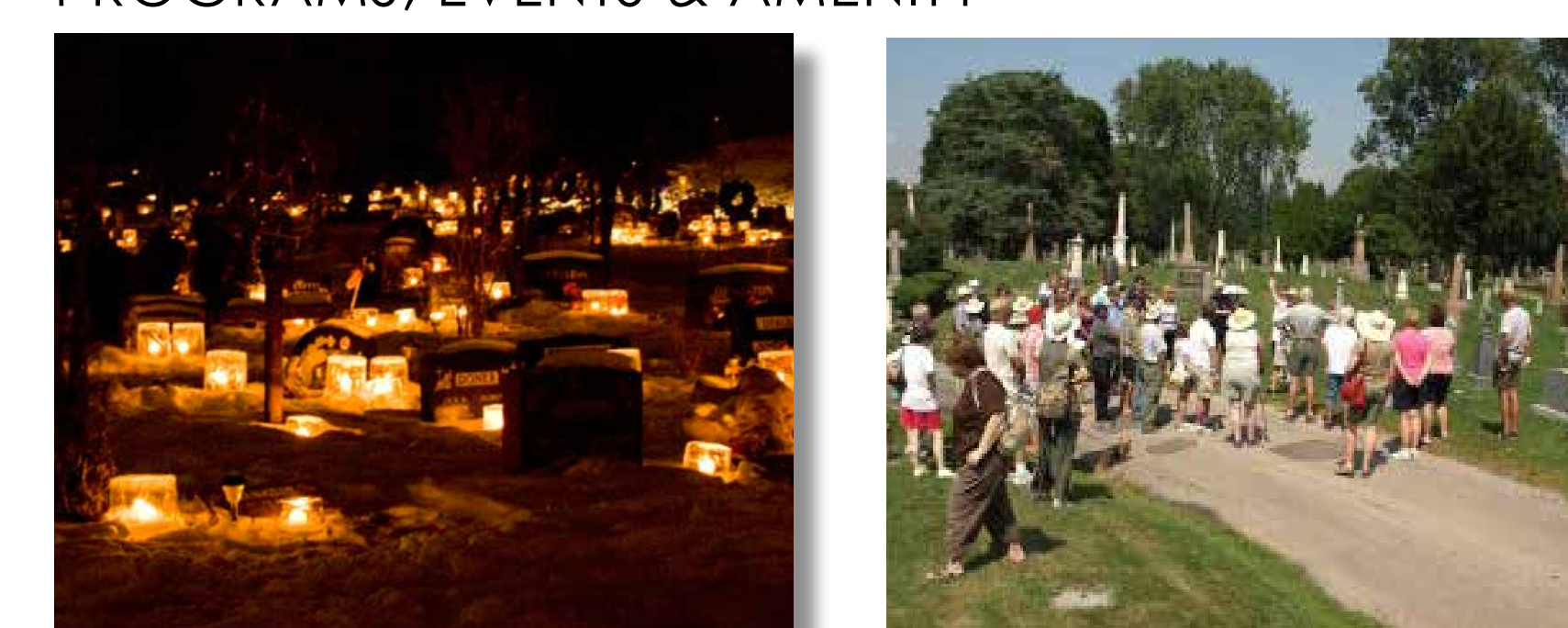
BOULDER MARKERS



ART, SCULPTURE & INFORMATION



PROGRAMS, EVENTS & AMENITY

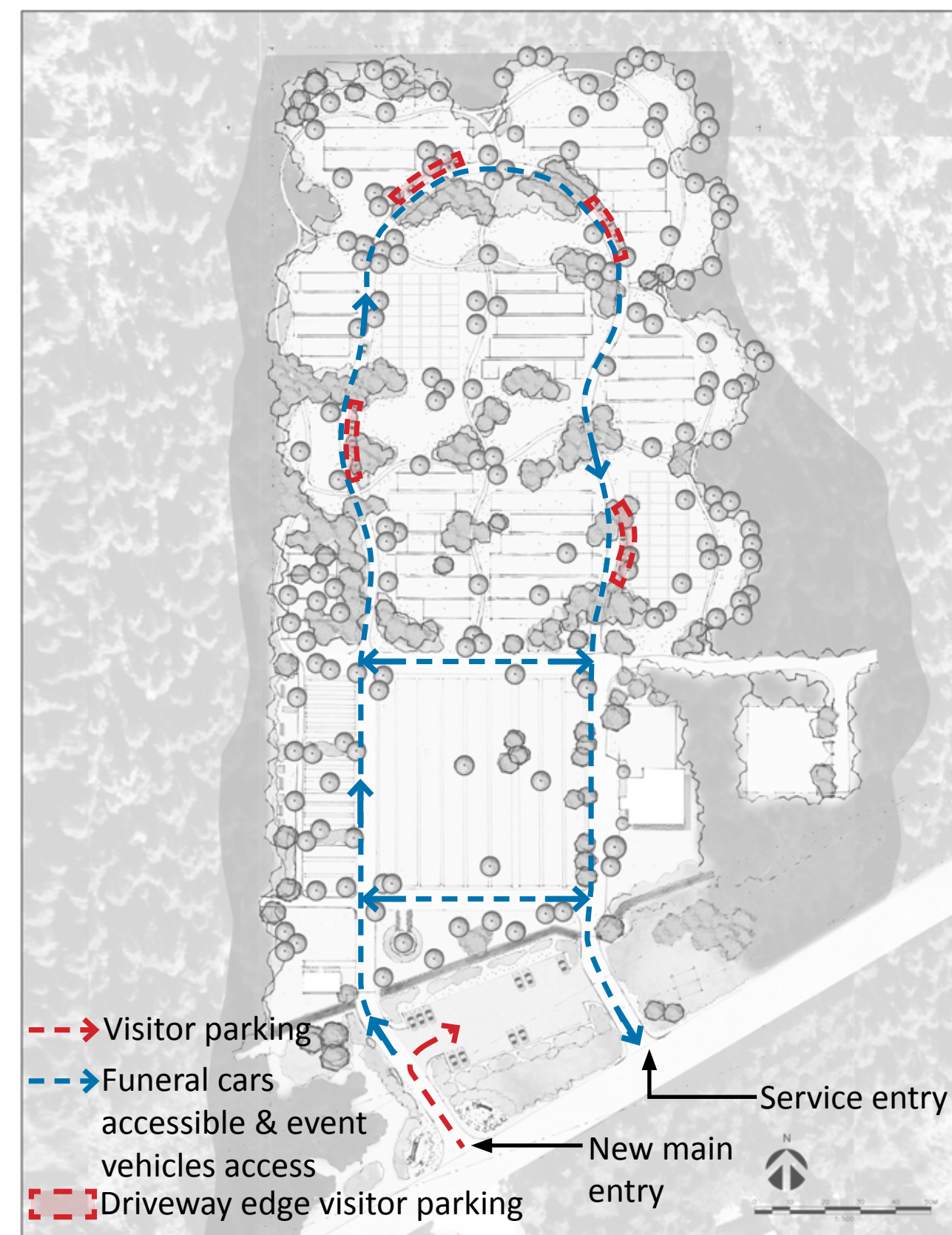




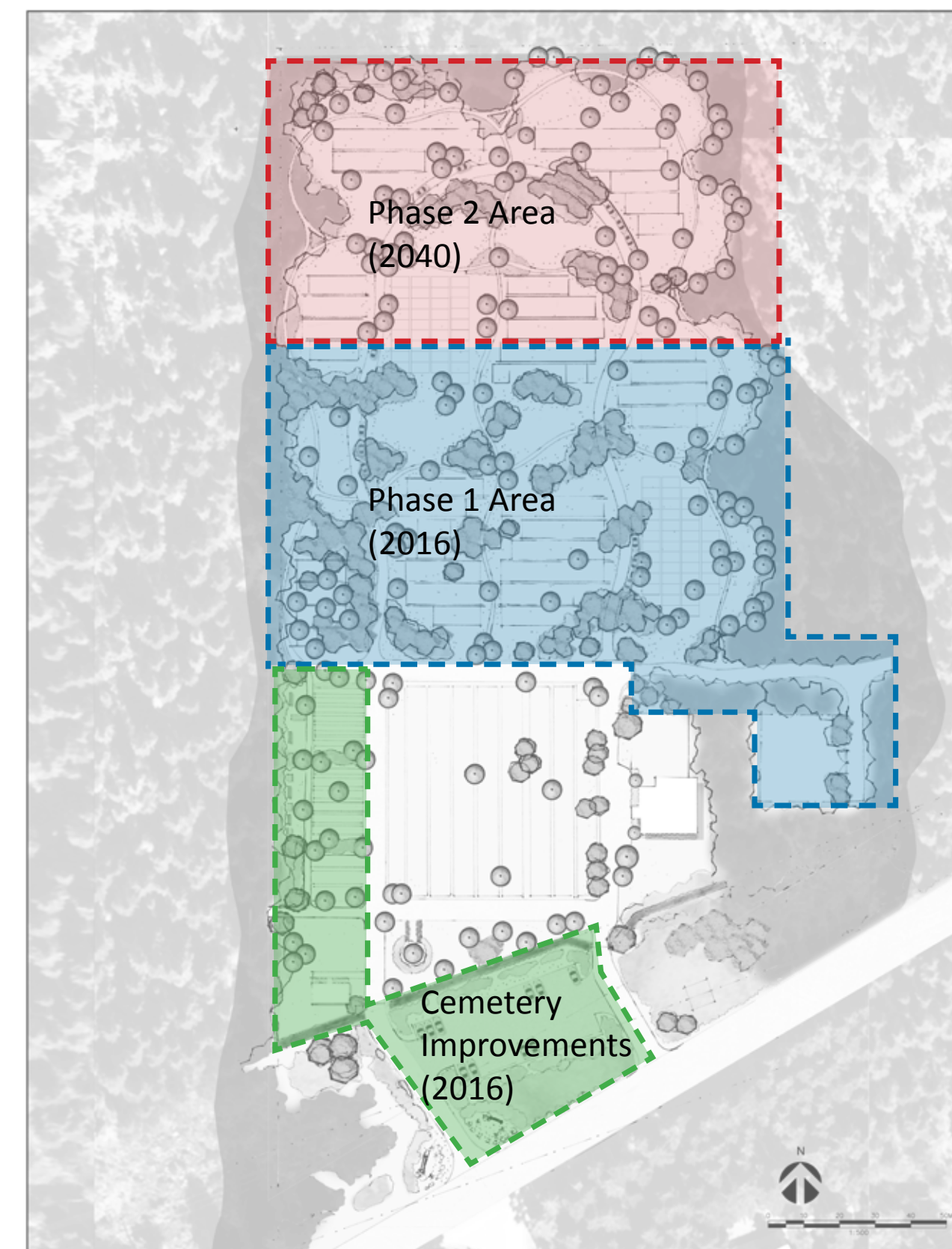
INTERMENT AND MEMORIALIZATION ZONES



VISITOR/FUNERAL SERVICE ACCESS & CIRCULATION



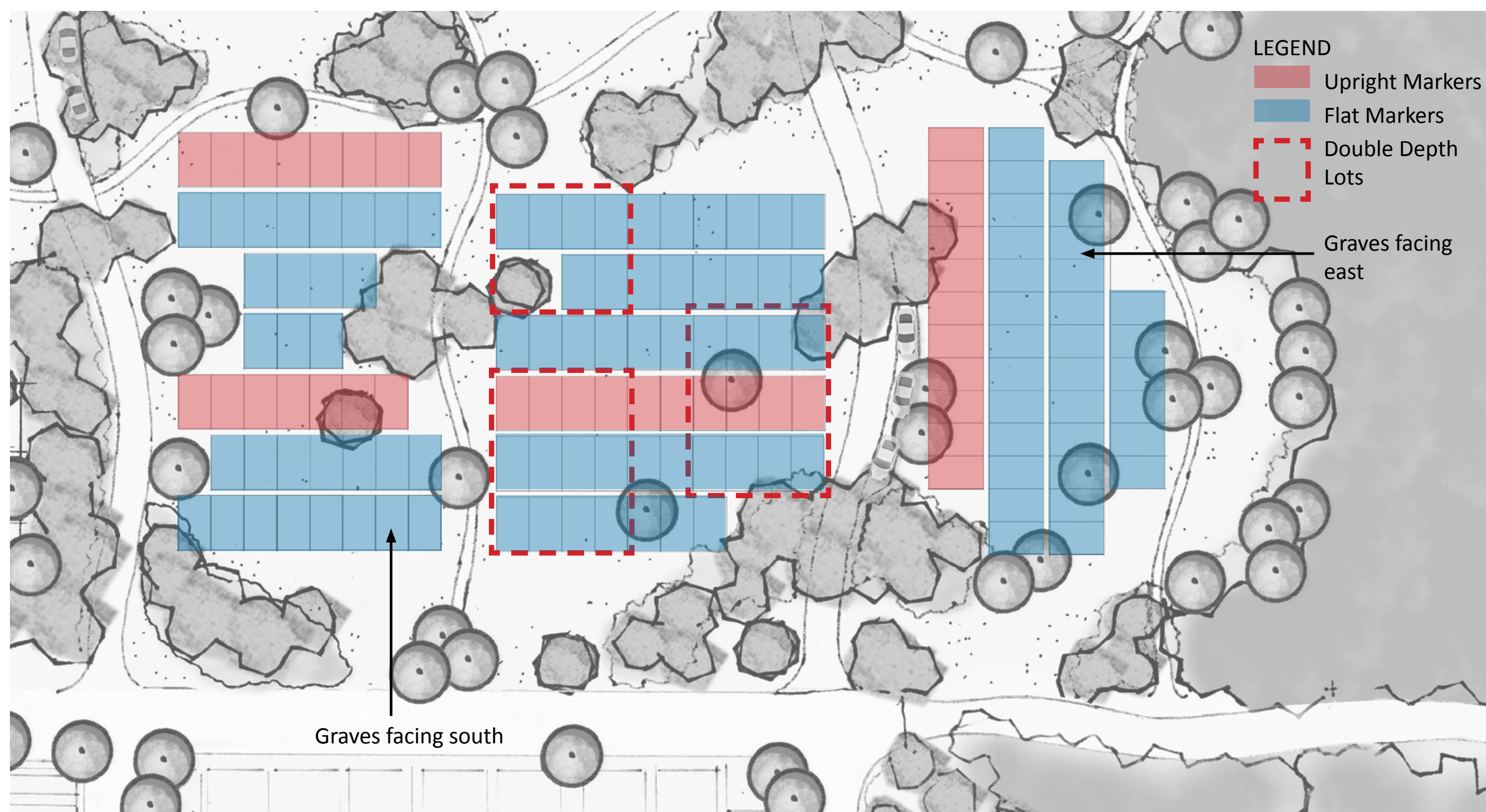
PHASING PLAN



AMENITY

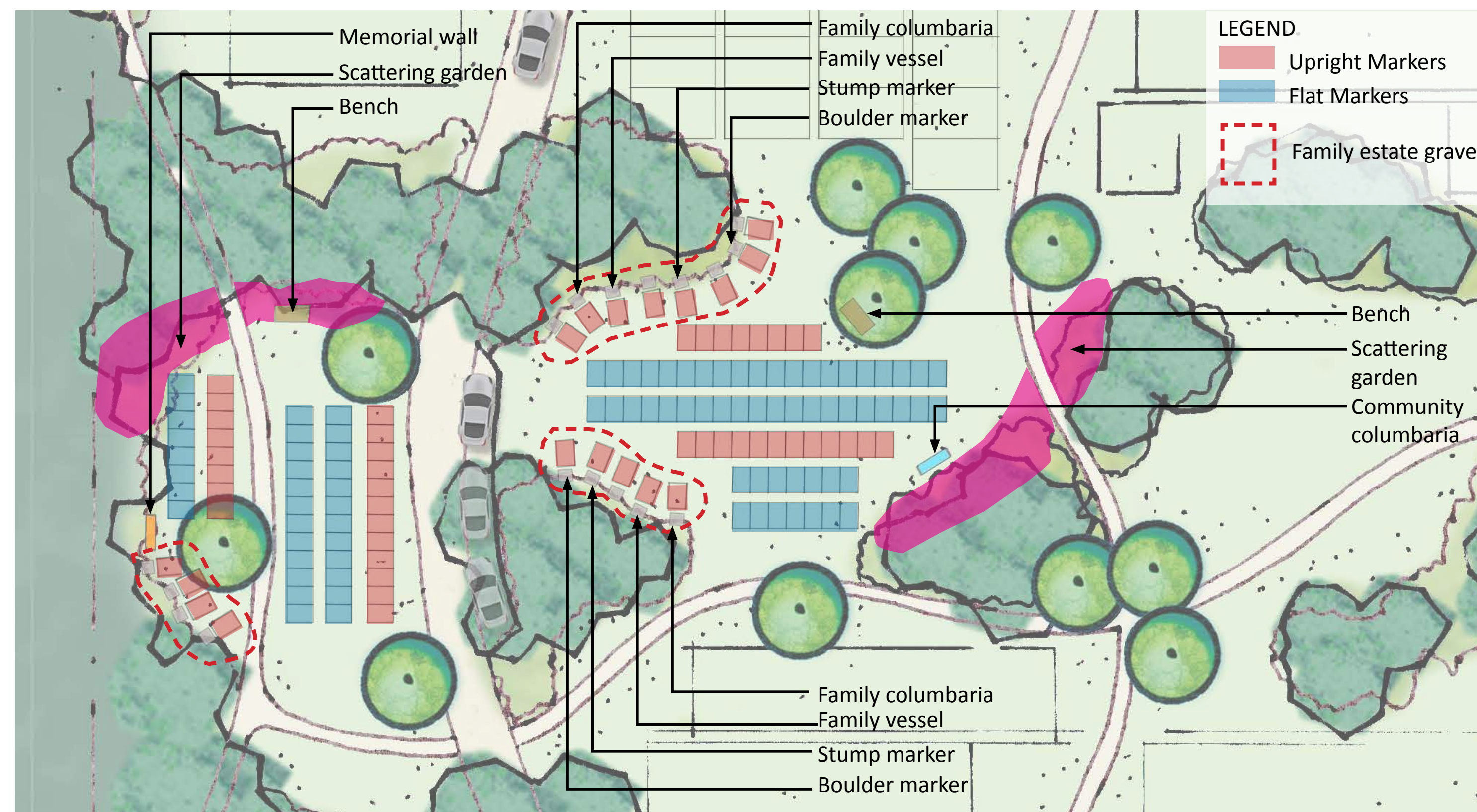


PHASE 1 TRADITIONAL IN-GROUND BURIAL AREA: TYPICAL GRAVE LAYOUT



• The sun will shine on the front of upright markers on south facing graves.  Not to scale

PHASE 1 WOODLAND CREMATION GARDEN: TYPICAL LAYOUT



The phase 1 burial expansion area will provide approximately:

- 600 traditional in-ground casket burial graves
- 60 green burial graves
- 30+ years of cremation inventory

This will provide burial capacity for the next 30+ years.

3. HOW THE CEMETERY WILL WORK  
ELK FALLS CEMETERY IMPROVEMENTS AND EXPANSION PROJECT