

Frequently Asked Questions

What layers are available for query?

There is a variety of information available including:

- Parcel Data
- Zoning
- Streams
- Schools
- Parks
- Public Washrooms
- City Landmarks
- Garbage Pickup
- Trails
- Truck Routes
- Engineering Layers
- Air photos (2007, 2005, 2002)

How do I search for a property parcel?

There are a number of built-in functions available across the top of the City Web Map including search by: roll number, address, VIP/VIS planning number, or parcel ID.

Are there any tutorials on-line for the City Web map?

Yes. Campbell River City Web Map comes with a comprehensive on-line help system, accessed by the question mark at the upper right hand corner of your screen.

What is the underlying technology?

Campbell River City Web Map is based upon an enterprise-level GIS. Data is stored using ESRI's spatial database engine (SDE), and accessed using ArcGIS Server (Standard Enterprise Edition). The front-end web access runs on Latitude Geographics' GeoEssentials, and features custom-tailored parcel-search tools.

The site is remarkably easy to navigate through a variety of means and offers drop-down toolbars with the capability to:

- Zoom /pan/ search
- Select by location/proximity
- Query parcels
- Buffer features
- Export attributes of selected features to a spreadsheet
- Mark up/add text
- Measure Features
- Print/export a map (ctl+ print)
 - .pdf, gif, jpg. ..
- Save/Bookmark your project

Suggestions?

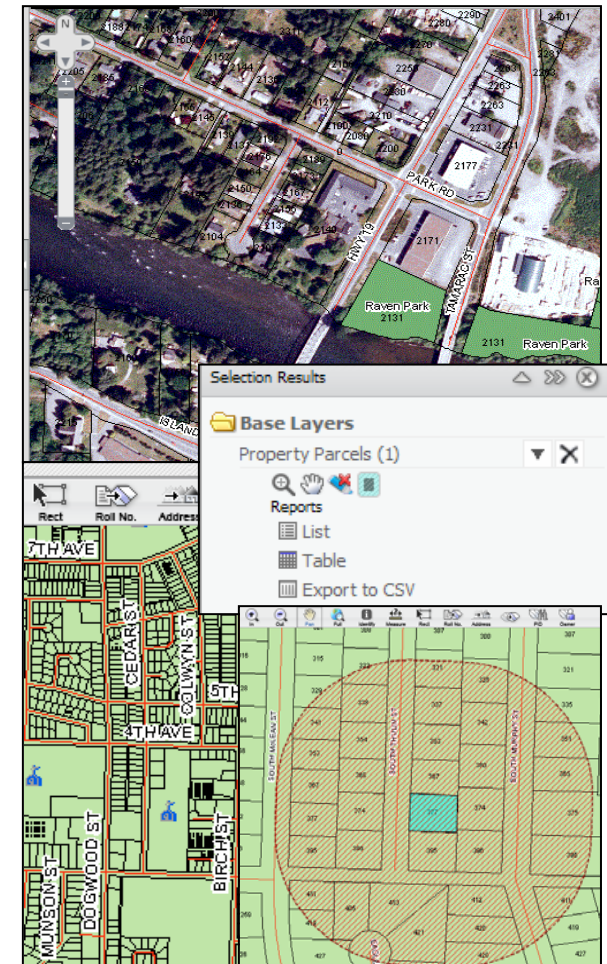
What features would you like to see included in future editions of the City Web Map?

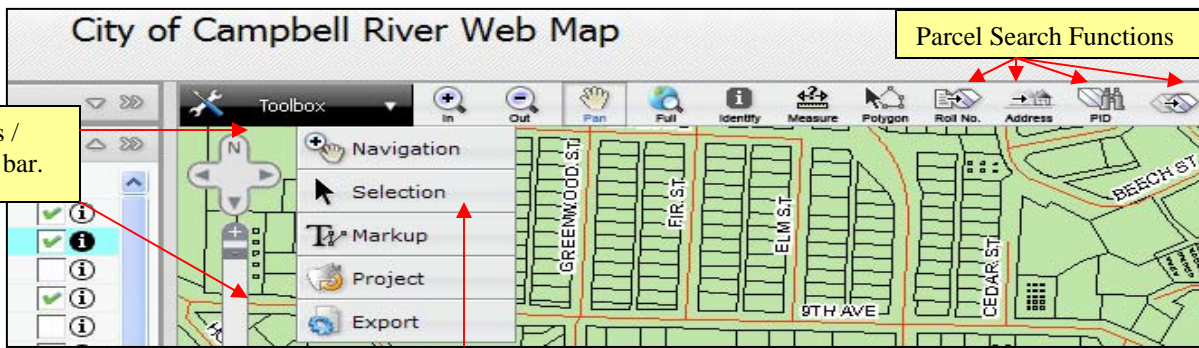
Email your ideas/comments to:

webmaster@campbellriver.ca



City Web Map

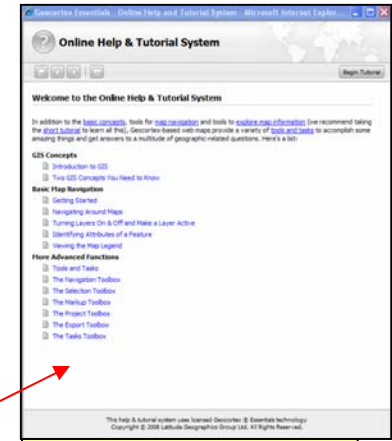




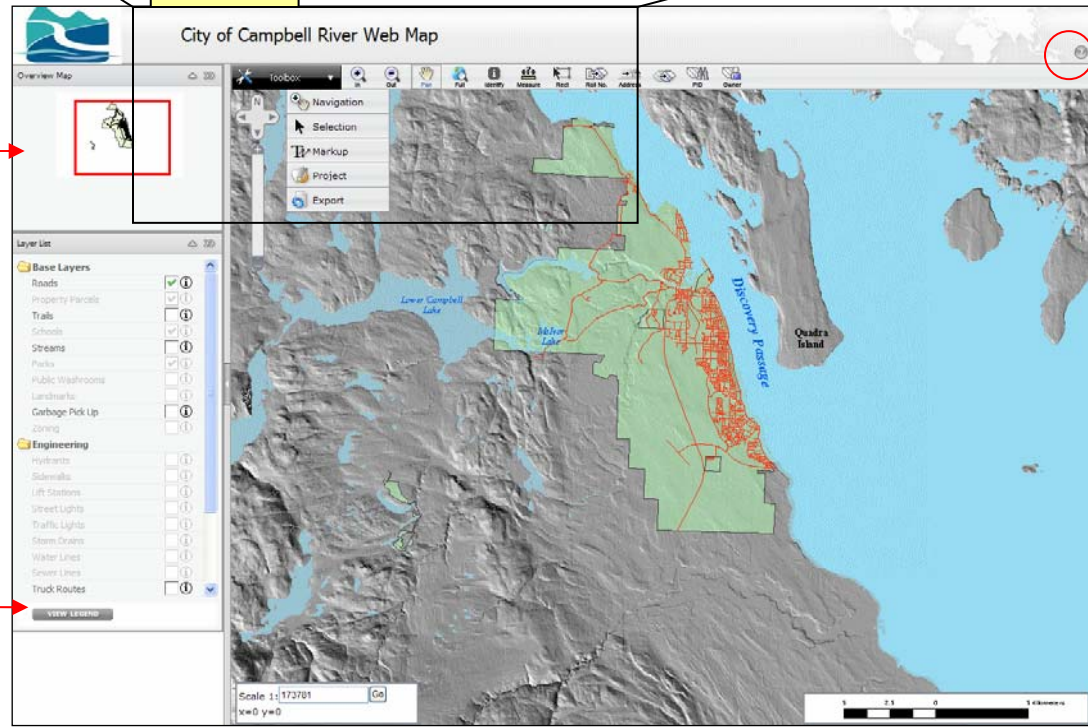
Pan with compass /
Zoom with slider bar.

Parcel Search Functions

Drop
Down
Toolbars

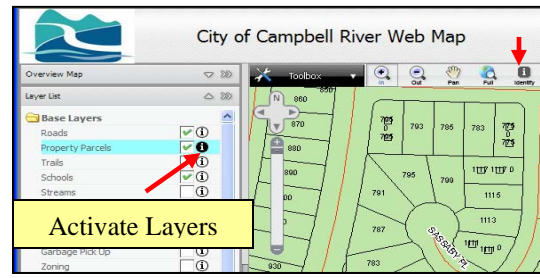


Comprehensive on-line
help system

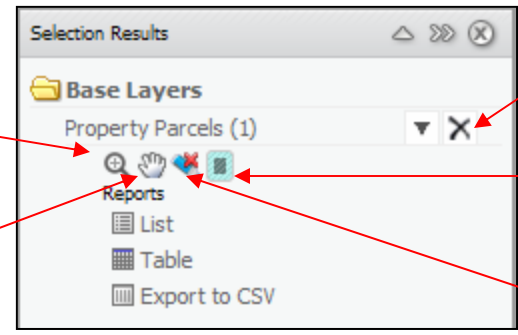


Navigate by
overview map

Show legend



Activate Layers



Zoom to Selection

Pan to Selection

Clear Selection

Buffer Selection

Un-highlight
Selection