

Statement of Significance

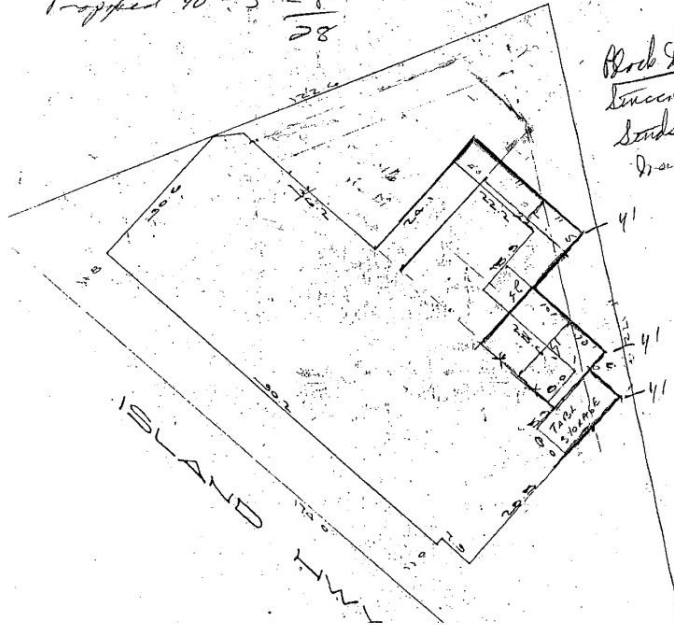
Willow Point Community Hall

1 inch = 20 feet

Parbing $100 \div 5 = 20$
Cropped $40 \div 5 = 8$
28

Check structural Eng
to check a dist.
floor system.

Block Fall on
Linen Eco on
Lands 5/8 by fire
Drivale



By Michelle Sirett, BREC, CRM
Recreation and Culture Supervisor
City of Campbell River

Statement of Significance

Lion's Willow Point Community Hall

Description

The Lion's Willow Point Hall is a Community Hall built completely by community volunteers in 1940. The Hall is a simple wood frame structure located on the water at 2165 Old Island Highway in the City of Campbell River.

The inside of the Willow Point Hall hosts a unique wood floor construction; plywood set on edge. The main hall is small and holds approximately 200 people. There is a stage, full catering kitchen, washrooms, storage and an office in behind the stage. The Hall on the whole has an atmosphere that is very warm and inviting.

Heritage Value

The Willow Point Hall is valued as the oldest community hall in Campbell River and an important reminder and tangible example of small community halls built up and down the coast of Vancouver Island in the 1940's. The building recalls the simple building traditions, construction materials and open space floor design that characterized this building type. The building was built by community volunteers and has been owned and operated by community organizations since its construction.

The Willow Point Hall is valued for its association with many of the oldest families in Campbell River. The Hall evokes memories of a way of life and has been a gathering place for the Willow Point community since it was built. Everything happened at the Willow Point Hall; weddings, scouts, brownies, political gatherings, church events, anniversaries, dances, recitals and many other cultural events.

The Hall is valued for its unique floor construction. The construction method was plywood set on edge. The floor is the original floor and is about 1.5 inches thick. The Willow Point Hall was the first hall in Campbell River to use this type of flooring and is the only remaining flooring in its original context.

Its position along the highway and placement adjacent to Sybil Andrew's home make the Hall a Landmark along the Old Island Highway.

Character Defining Elements

- Original wood flooring (plywood set on edge) is a unique method of flooring and is aesthetically beautiful and adds to the welcoming warm feeling of the hall.
- The Stage is a unique addition, not often found in small Community Halls
- The windows in the main hall bring in natural light and add to the warm and welcoming atmosphere. The windows are not original but have kept the same style as the originals windows.
- The location of the Hall along the highway and adjacent to the Sybil Andrews Cottage.
- The roof line stands out among the other buildings in the area.
- The original old style kitchen with serving window is typical of 1940's community halls.