

# Greenways Loop

Maryland Road to Jubilee Parkway



City of  
Campbell  
River

Workshop January 25, 2012

**HB LANARC**  
PLANNING DESIGN SUSTAINABILITY

*A Member of the Golder Group of Companies*

 **HIGHLAND**  
Engineering and Surveying  
Professional Engineers and Land Surveyors

#104-950 Alder Street, (250) 287-2825  
Campbell River, B.C., V9W 2P8 [highland@highland-eng.ca](mailto:highland@highland-eng.ca)  
1614.DWG [www.highland-eng.ca](http://www.highland-eng.ca)

# Agenda

6:45 Doors Open

7:00 Presentation

7:45 Workshop

9:00 Question and Answer



# Project Context

- Several trail pieces in place:
  - Rotary Seawalk
  - ERT Trail
  - Jubilee Trail
- Greenways Loop
  - Joins these pieces to create a loop
  - Maryland to Jubilee Parkway is a key piece.

# Meeting Objectives

- Introduce the project
- Identify site constraints
- Think about opportunities
- Consider options
- Gain input from interested public about values that should guide the project

# Study Location

- Along South Island Highway (19A)
- Ends at existing trail at Jubilee Parkway (near entry sign)
- Starts at south end of existing Seawalk (near Maryland Rd)



# Site Analysis

## Constraints:

- Existing trees
- Steep sideslopes
- Open ditches
- Overhead utilities
- Underground utilities
- Split jurisdiction  
(City, Electoral Area D, Ministry of Transportation)



# Site Analysis

## Opportunities:

- Existing City Park
- Frontage roads
- Existing road shoulders
- Path right of way
- Informal trail use



# Alternatives

- Long Term Ideal
- Short Term Alternatives
  - Option A
  - Option B



# Long Term Ideal

Existing



# Long Term Ideal

Proposed



# Long Term Ideal

## Proposed Plan



# Context

## Proposed Plan



# Option A

## Features:

- Extends Seawalk on water side up to Washington Dr.
- Flashing light crossing at Washington Dr. intersection
- Shares frontage road Washington to Colorado
- Concrete barrier protected walk at Ocean Grove Store
- New right of way to formalize informal walk
- Connect to existing frontage road and trail at Jubilee Parkway near existing sign.

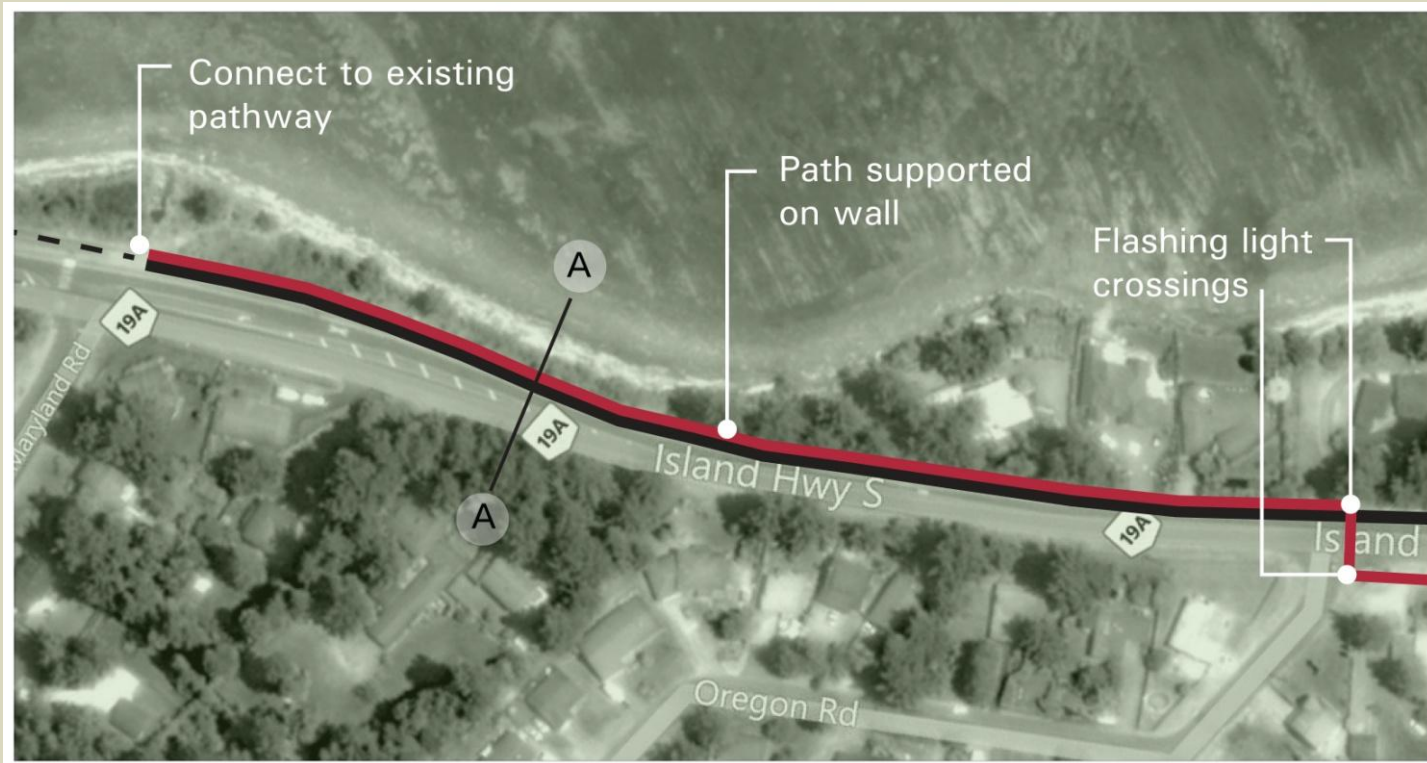
# Option B

## Features:

- Extends Seawalk on water side all the way up to Colorado Drive
- Flashing light crossing at Colorado Dr. intersection
- Otherwise similar to Option A

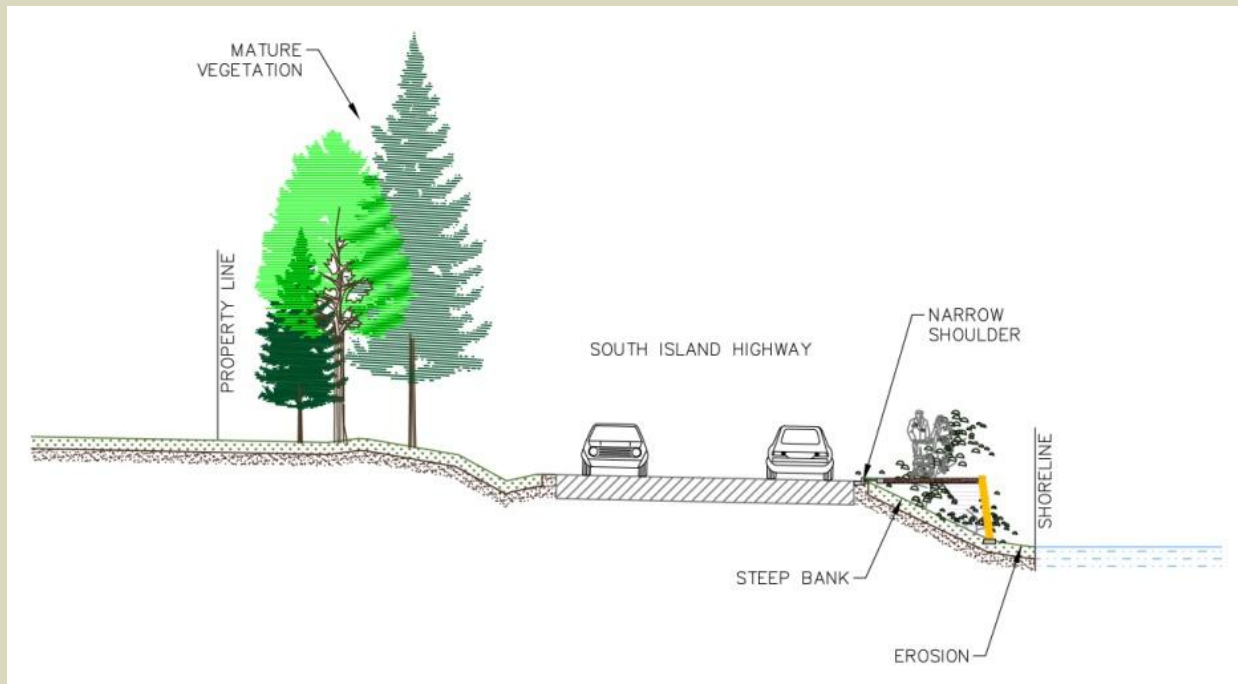
# Area 1

## Proposed Plan



# Area 1

## Section AA Proposed (NTS)



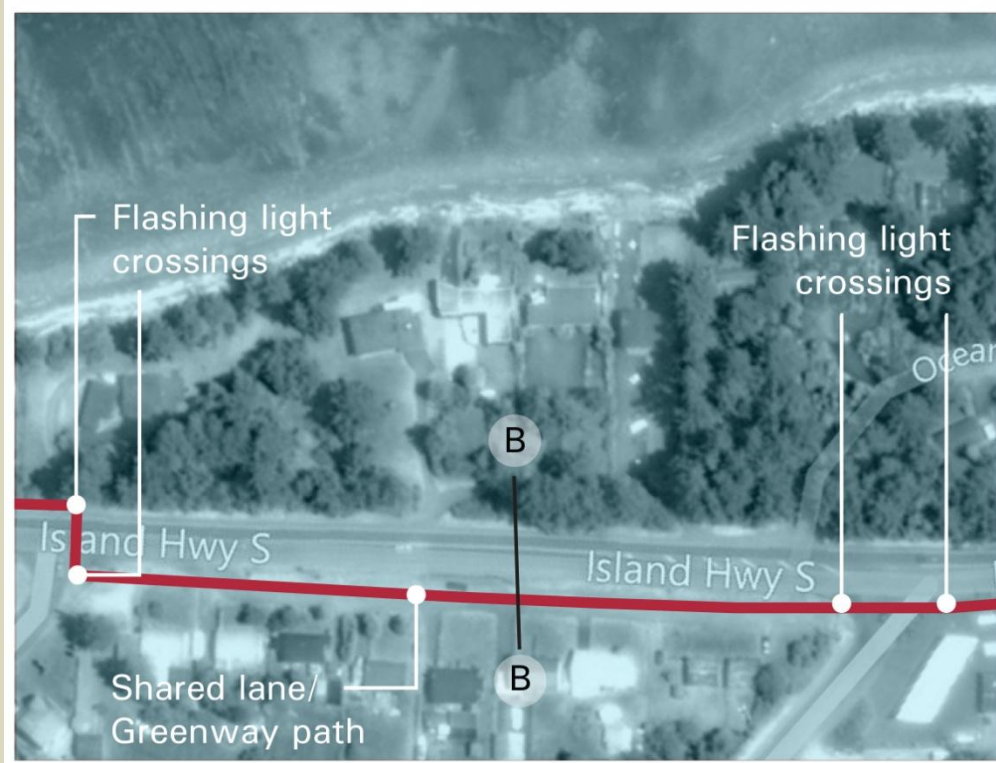
### Constraints:

- **Narrow shoulder**
- **Beach erosion**
- **Steep slope**
- **Environmentally sensitive area**
- **Mature trees**
- **Property rights**
- **Driveways**



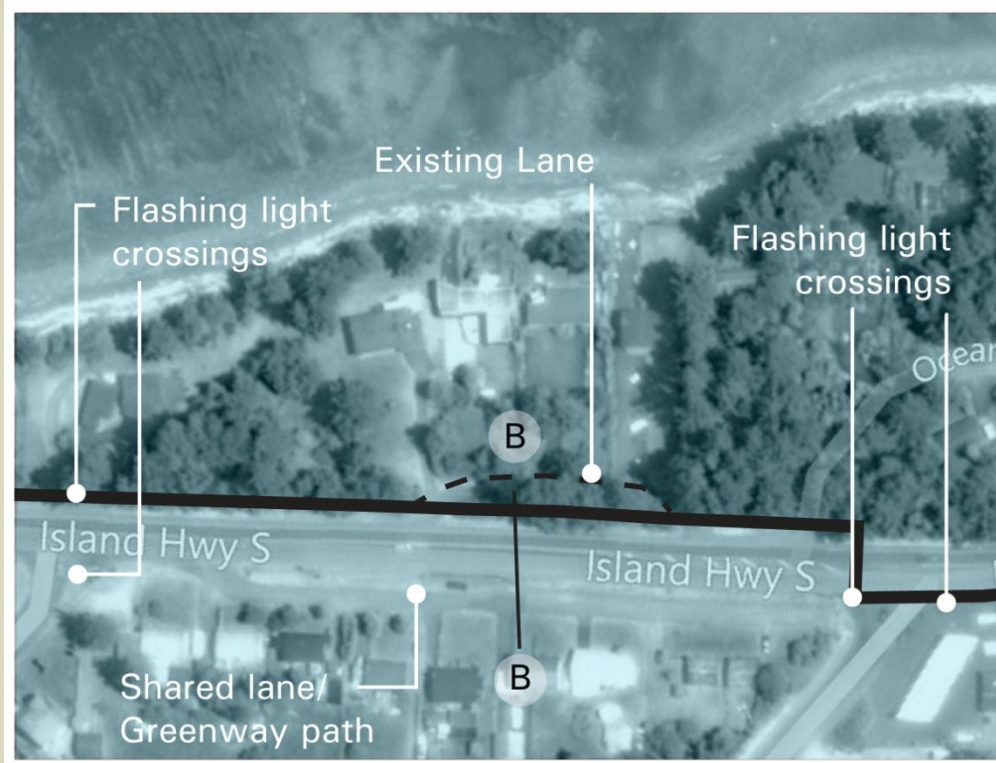
# Area 2

## Proposed Plan – Option A



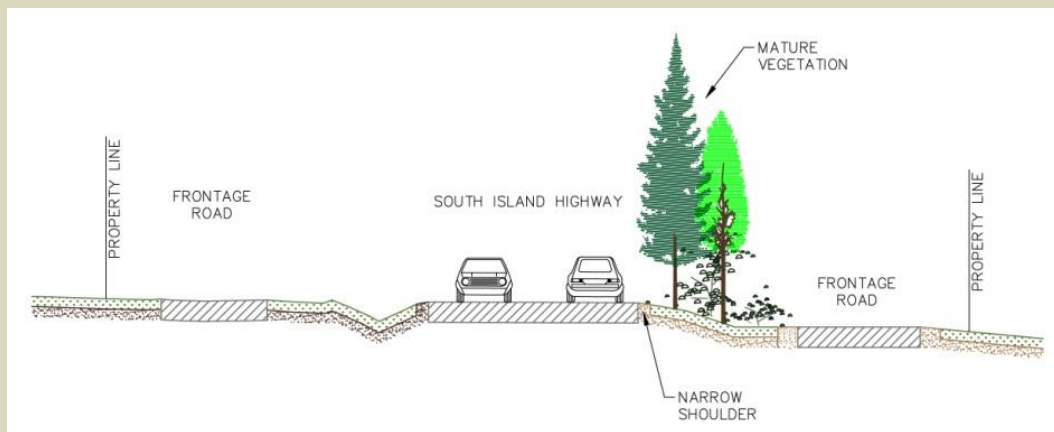
# Area 2

## Proposed Plan – Option B



# Area 2

## Option A – Section BB (NTS)



## Option B – Section BB (NTS)

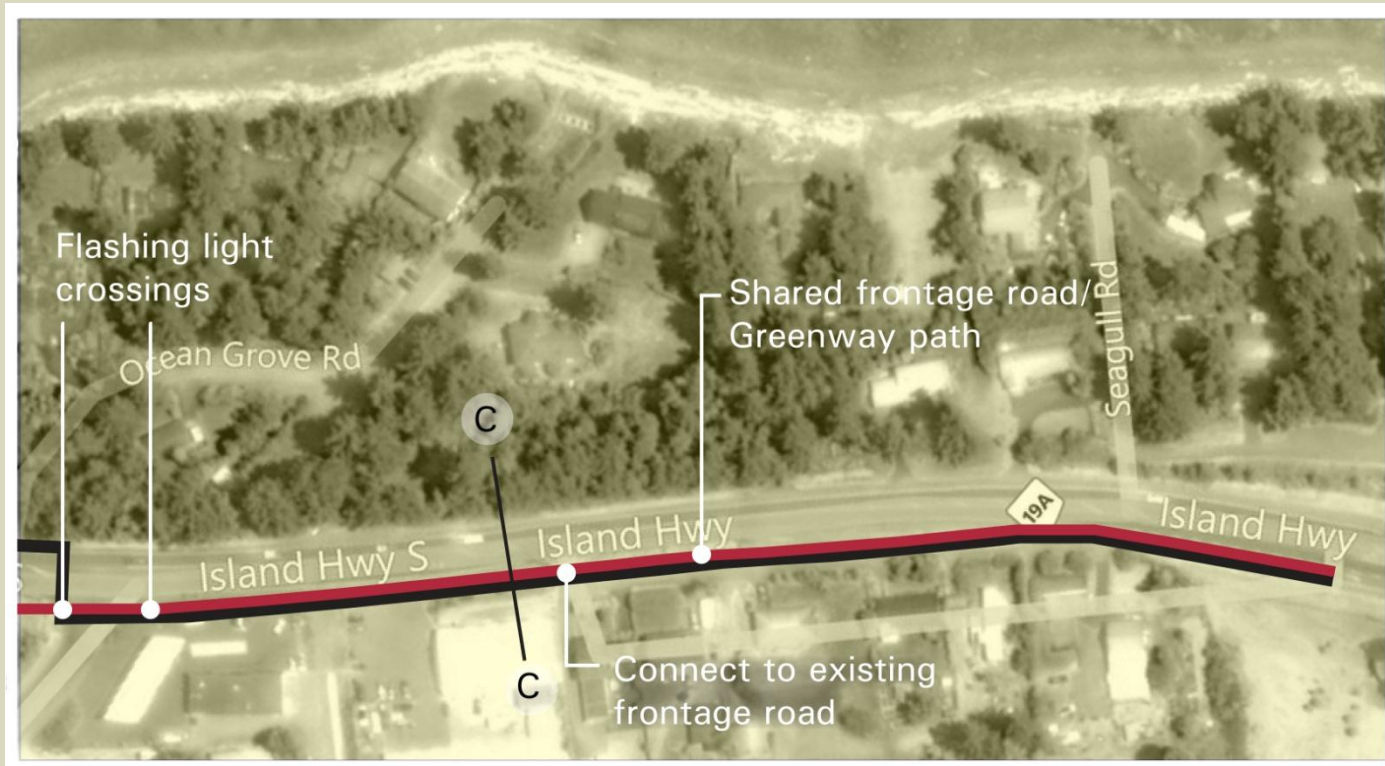


### Constraints:

- **Narrow shoulder**
- **Mature vegetation**
- **Lane access**

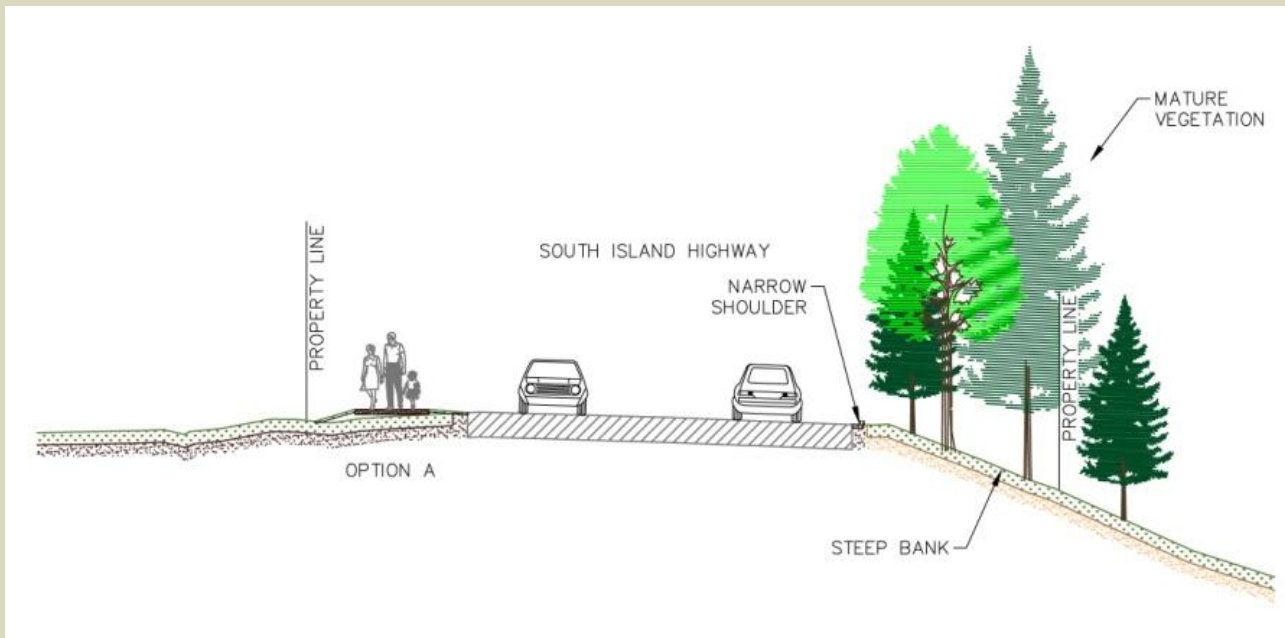
# Area 3

## Proposed Plan



# Area 3

## Section CC Proposed (NTS)



- Constraints:**
- **Narrow shoulder**
  - **Steep slope**
  - **Mature vegetation**
  - **Acquire SRW from property**

# Evaluating the Options

## Values to Consider

- Safety of trail use
- Safety of trail highway crossing
- Accessible to target trail uses (walking, jogging, cycling, inline skates, disabled?)
- Maximum views of the waterfront
- Minimum environmental impact
- Minimize impacts on existing trees
- Minimize need for walls on steep sideslopes

# Evaluating the Options

## Values to Consider

- Minimize costs of adapting overhead and underground utilities, drainage
- Minimize costs of new paving
- Minimize need for new right of way purchase
- Gain Ministry of Transportation acceptance
- Minimize maintenance and operations cost
- Allow for Long Term Ideal to be realized
- Other?

# Small Group Workshop

- Sit in groups of 5 – 8
- Sit where you will hear new opinions!
- Fill out a ‘consensus’ response form together.
- Appoint one of your group to facilitate.
- Appoint another to record.

## Reporting at end:

- 3-5 points of agreement
- 3-5 remaining issues



# Individual Responses

## Individual Responses:

- Fill out your own individual response form too
- Individual responses will be collated and summarized for Council

## Submit Your Response:

- At the designated box at the workshop
- By scan/email to Melissa Heidema  
[Melissa.Heidema@campbellriver.ca](mailto:Melissa.Heidema@campbellriver.ca)
- Drop it off at City Hall (second floor counter)
- Fill it out online at [www.campbellriver.ca](http://www.campbellriver.ca)

No later than Feb 1, 2012!

...towards completing the Greenways Loop!

Thanks!



City of  
Campbell  
River

**HB LANARC**  
PLANNING DESIGN SUSTAINABILITY

*A Member of the Golder Group of Companies*

 **HIGHLAND**  
Engineering and Surveying

Professional Engineers and Land Surveyors

#104-950 Alder Street, (250) 287-2825  
Campbell River, B.C., V9W 2P8 [highland@highland-eng.ca](mailto:highland@highland-eng.ca)  
1614.DWG [www.highland-eng.ca](http://www.highland-eng.ca)